

FLORADALE FEED MILL

FEBRUARY 2023



MONTHLY NEWSLETTER

Vol 2 Issue 20



**FRIENDLY REMINDER:
WE WILL BE CLOSED
ON FEBRUARY 20 FOR
FAMILY DAY.**



Mark Your Calendar

IN-PERSON EVENTS ARE BACK!



**THE NATIONAL
POULTRY SHOW
FEBRUARY 8 & 9**

LONDON, ON



**SOUTHWEST DAIRY
SYMPOSIUM
FEBRUARY 22**

WOODSTOCK, ON



**CANADIAN
DAIRY EXPO
APRIL 5 & 6**

STRATFORD, ON

Happy Family Day!



FROM OUR FAMILY TO YOURS

Family operations are truly the backbone of our industry. As our country celebrates "family" on February 20th, we think of the generations of families who have invested, sacrificed and live to love the land and their livestock. Thank you, farmers & your families every day.



ESCAPE TO WISCONSIN

You heard right! The bus trip is back. We are headed to the World Dairy Expo this fall and we want to take you with us! Stay tuned for contest details launching in March to win your spot!

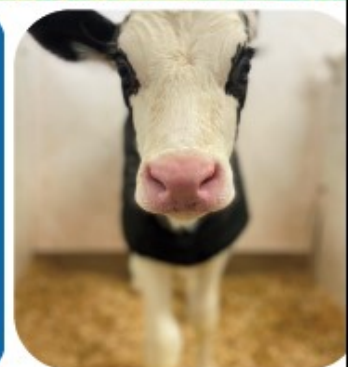
GIVEAWAY



Tip of the Month

5m ago

Colostrum doesn't just help immunity in calves; it's also an important source of calories to help young calves stay warm in winter. Make sure calves are receiving 4 litres of colostrum in the first 8 hours after birth to improve immunity and help keep calves cozy.



FLORADALE WELCOMES CLAY BIRKETT & HACKMAN ANKUMAH



CLAY BIRKETT IS ANNOUNCED AS FLORADALE'S GENERAL MAANGER

Floradale Feed Mill Ltd. is pleased to welcome Clay Birkett as General Manager. Originally born in Saskatchewan, Clay grew up on a grain and animal farm, which he still owns today.

Welcome, Clay!

Clay comes to us with over 25 years of experience in Operations Management, holding past positions as President and Global Vice-President in various manufacturing industries. Clay is a driven professional that will bring honest leadership, accountability, dedication, and a commitment to work and life.



416.432.8803
clayb@ffmltd.com

Clay is excited to join the Floradale team & looks forward to connecting with our fantastic community.

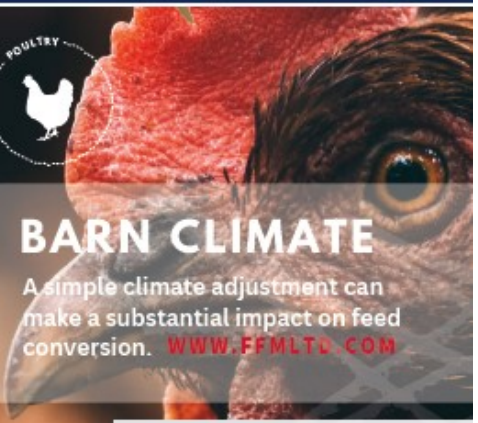
HACKMAN ANKUMAH JOINS THE FLORADALE TEAM AS POULTRY SUPPORT SPECIALIST

Welcome to the team, Hackman Ankumah! As Floradale's Poultry Support Specialist, Hackman is excited to work with the Floradale customer base, bringing a vast range of knowledge, technical expertise and over 30 years of extensive experience in the poultry industry. His background has largely focused on RWA programs, but he is no stranger to conventional breeder production and broiler performance.



519.577.5946
hackmana@ffmltd.com

Hackman also specializes in broiler early life. Looking to maximize performance with an efficient start in those crucial first ten days? Hackman would love to chat! Contact him today to set up your free consultation.



BARN CLIMATE

A simple climate adjustment can make a substantial impact on feed conversion. WWW.FFMLTD.COM

BARN A



BETTER 77.4°

- Temperature and relative humidity are critical in climate control
- A good house climate results in lower mortality and reduced disease risk
- The huddled birds in barn A will use the nutrients to get warm rather than to grow and therefore will reduce feed conversions

BARN B



BEST 78.4°

- One degree higher and the birds are much more comfortable.
- They will use the feed more efficiently which will result in better feed conversions and weights.
- An optimum environment allows chicks to buildup better immunity resulting in lower stress levels and achieving their genetic potential



Want more information? Contact Mark Caesar today.

519.501.4146
markc@ffmltd.com